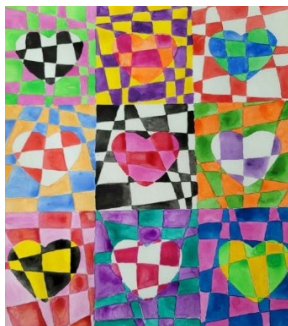


2020 BAC WATERCOLOR ADVANCED STAIN GLASS



SUPPLIES NEEDED:

- WATERCOLOR PAINTS, BRUSHES, PAPER
- HEART TRACERS – SIZE DEPENDING ON HOW MANY YOU WANT ON ONE PAGE
- BAC PENCIL
- RULER (optional)
- SMOCK OR OLD SHIRT
- TABLE COVERING
- BLOW DRYER (optional)

DIRECTIONS:

1. Decide how many hearts you want to use for your project. The example has 9 squares each with a heart inside.
2. On a prepared work surface, use your pencil to lightly divide your paper into one square for each heart. The lightly trace hearts onto watercolor paper filling up the paper to make your design.
3. Then, use your pencil to lightly draw vertical and horizontal lines throughout the paper. Lines can be straight or curvy. The result will be lots of small different shapes within your design.
4. Choose your colors and wet them in watercolor tray.
5. With one color, begin filling in individual sections with paint using a small brush. Avoid painting sections that are touching each other as the paint may bleed into the other shape. So, skip around your paper.
6. With another color, fill in more small sections avoiding painting sections that are touching like in step 4.
7. Continue painting in other sections like in steps 4 and 5. You might need some drying time to avoid adding new colors next to wet paint. You can speed up drying time with a blow dryer.
8. Keep painting in sections until you are happy with your stain glass hearts. You can leave some spaces white if you want to.
9. Let us know how you liked this activity. Upload your photos to your Google Drive Folder and send your comments to Lsorensen@bacemploy.com